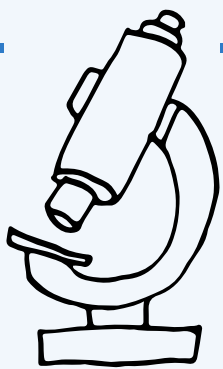


# Improving Diagnostic Consistency in Serrated Polyp Pathology Using Targeted Education

D.B.Johnston<sup>1</sup>, H.G.Coleman<sup>1</sup>, K.Sheahan<sup>2</sup>, A.Bateman<sup>3</sup>, C.McShane<sup>1</sup>, M.B.Loughrey<sup>4</sup>

- Colorectal serrated polyps including sessile serrated lesions are precursors to colorectal cancer, so accurate diagnosis is important.
- Variation exists between pathologists when diagnosing these lesions.
- The influence of training, experience, and workplace practices on this variation is unclear.

**Aim: Assess these influences and test whether a brief educational intervention improves diagnostic accuracy**



## METHODS

### QUESTIONNAIRE ON PROFESSIONAL CHARACTERISTICS AND REPORTING PRACTICES

→ BASELINE DIAGNOSTIC TEST (20 HISTOPATHOLOGY IMAGES)

→ 5-MINUTE EDUCATIONAL VIDEO OUTLINING DIAGNOSTIC CRITERIA AND PITFALLS

→ REPEAT DIAGNOSTIC ASSESSMENT (SAME 20 HISTOPATHOLOGY IMAGES REORDERED)

**Results – 119 completed baseline, 105 completed intervention + reassessment**

- Baseline accuracy: 15.6 / 20 → After education: 16.7 / 20 ( $p < 0.001$ )
- 57% of participants improved accuracy
- GI specialists showed slightly higher scores at baseline

## KEY MESSAGE

**A SHORT 5-MINUTE TARGETED EDUCATIONAL INTERVENTION SIGNIFICANTLY IMPROVED DIAGNOSTIC ACCURACY IN COLORECTAL SERRATED POLYP PATHOLOGY.**